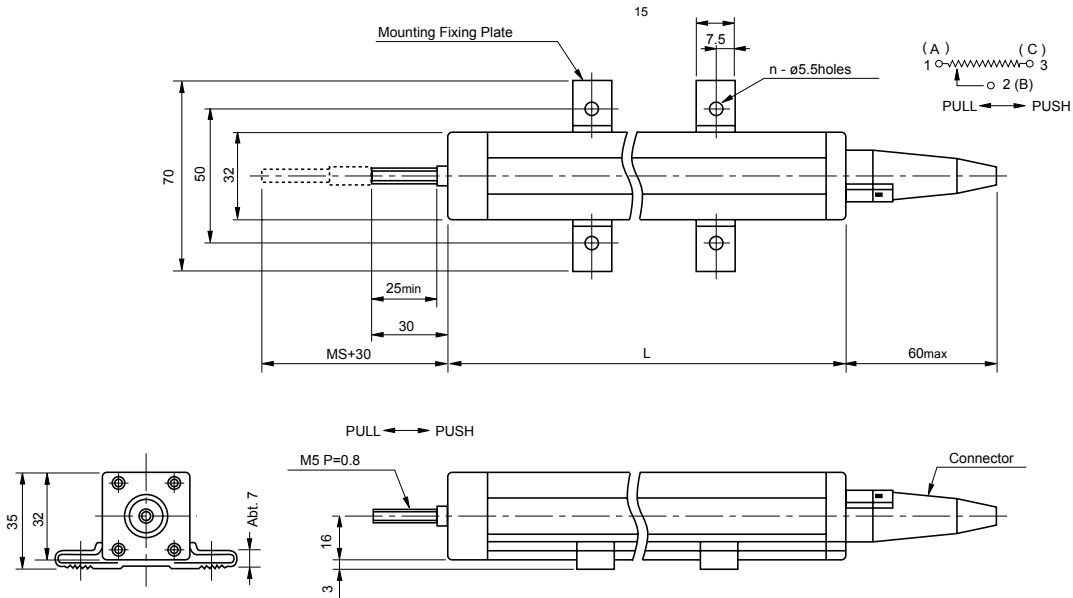




Model 30FLP

Conductive plastic (With front extended shaft)

Standard dimensions



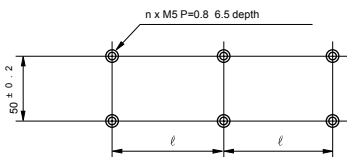
Model No.	L
30FLP100A	170
30FLP200A	270
30FLP300A	370
30FLP400A	470
30FLP500A	570
30FLP750A	820
30FLP1000A	1,070

Note: 2 pcs mounting fixing plates are attached in models 30FLP100A and 30FLP500A and 3 pcs mounting fixing plates are attached in models 30FLP750A and 30FLP1000A

Specifications of Connector

Number of poles: 6 poles
 Electrical wire diameter to be connected: $\phi 6.3\text{mm}$ max

Panel Arrangements

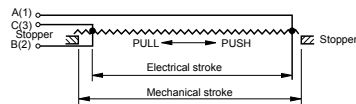


Stroke mm	100	200	300	400	500	750	1,000
ϕ mm	70	170	270	370	470	360	485
Number of attached fixing plate	2	2	2	2	2	3	3



Model 30FLP200A

Terminal Connection Diagram



Standard Model Nos.

- 30FLP00A stroke 100mm
- 30FLP200A stroke 200mm
- 30FLP300A stroke 300mm
- 30FLP400A stroke 400mm
- 30FLP500A stroke 500mm
- 30FLP750A stroke 750mm
- 30FLP1000A stroke 1000mm

■ General Specifications

Model No.	30FLP100A	30FLP200A	30FLP300A	30FLP400A	30FLP500A	30FLP750A	30FLP1000A
Standard Resistance Range	1k ~ 10kΩ	2k ~ 20kΩ	5k ~ 50kΩ	5k ~ 100kΩ	5k ~ 200kΩ	5k ~ 200kΩ	10k ~ 500kΩ
Total Resistance Tolerance	Standard Class ±20% (M)						
	Precision Class ±10% (K)						
Independent Linearity Tolerance	Standard Class ±0.5%						
	Precision Class ±0.1%						
	Super-precision Class	±0.075%	±0.05%				-
Resolution	Essentially infinite						
Output Smoothness	Within 0.1% against input voltage						
Contact Resistance Variation	Within 2% C.R.V.						
Power Rating	1.25W	1.5W	2.0W	2.5W	5.0W	7.5W	10.0W
Electrical Stroke	100±1mm	200±1mm	300±1mm	400±1mm	500±1mm	750±1mm	1,000±1mm
Mechanical Stroke (MS) (Apporox.)	105mm	205mm	305mm	405mm	505mm	755mm	1,005mm
Insulation Resistance	Over 1,000M Ω at 500V.D.C.						
Dielectric Strength	1 minute at 900 V.A.C.						
Max. Working Voltage	500V						
Friction	Within 2N (200gf)						
Stopper Strength	Approx. 20N (2kgf)						
Resistance Temperature Coefficient	±400p.p.m./°C						
Mass	Approx. 200g	Approx. 350g	Approx. 500g	Approx. 650g	Approx. 800g	Approx. 1,300g	Approx. 1,600g

ALTHERIS bv

Scheveningseweg 15
2517 KS DEN HAAG
The Netherlands

+31 (0)70 3924421

+31 (0)70 3644249

Offices in : Benelux | Germany | France | UK | Italy | USA

www.altheris.com

sales@altheris.nl

LEADERS IN SENSORS & HEAVY DUTY JOYSTICKS

ALTHERIS
SENSORS & CONTROLS