

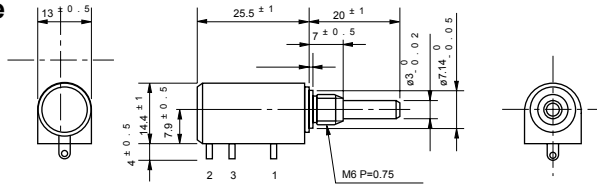


Model 12HHP-10

Hybrid (bushingmount servomount)

Standard dimensions (with metric dimensions)

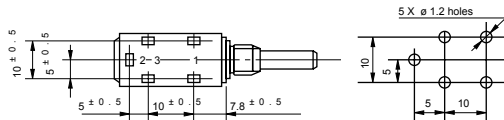
- Bushingmount type
- With lug terminals



**Model 12HHP-10
(Bushingmount)**

- With pin terminals for p.c. board

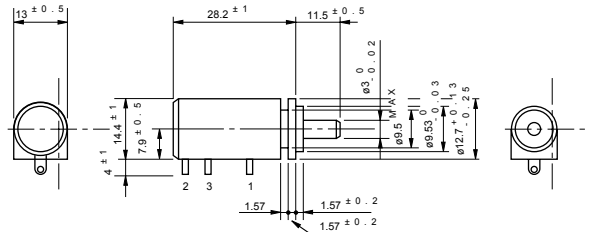
Terminal Holes Layout



**Model 12HHP-10
(Servomount)**

- Note: 1. 1pc. Each inner teeth washer and hex nut are attached.
 2. Please process the mounting hole on the panel to be mounted with this potentiometer by the diameter of 7.14mm

- Servomount type



Note: Servomount type with pin terminals for p.c. board is also available.

Standard Model Nos.

Bushingmount type:

With lug terminals:

12HHP

With pin terminals for pc board:

12HHP-10P

Servomount type:

12HHPS-10

General Specifications

Standard Resistance

Values: 2k, 5k, 10k, 20k, 50k (Ω)

Max. Practical

Resistance Value: 100k Ω

Total Resistance

Tolerance: Standard Class ±10%(K)
 Precision Class ±5%(J)

Independent Linearity

Tolerance: Standard Class ±0.4%
 Precision Class ±0.1%
 (±0.2% in case of within 5kΩ)

Resolution:

Essentially infinite

Output Smoothness:

Within 0.05% against input voltage

Contact Resistance

Variation: Within 5% C.R.V.

Power Rating:

1.0 W

Electrical Travel:

3,600° ±5°

Mechanical Travel:

3,600° +15°
 0°

Insulation Resistance:

Over 1,000MΩ at 500V.D.C.

Dielectric Strength:

1 minute at 1,000 V.A.C.

Starting Torque:

Within 3mN-m (30gf-cm)

(Bushingmount type)

Within 2mN-m (20gf-cm)

(Servomount type)

Approx. 0.15N-m (15kgf-cm)

Stopper Strength:

Max. Torque exerted

on fastening the

mounting nut to the

bushing:

Within 0.8mN-m (80kgf-cm)

Max. Working Voltage:

450V

Resistance

Temperature

Coefficient:

±100p.p.m./°C

Mass:

Approx. 10g

■ Special Specifications Available

5-turn type (S12HHP-5), shaft with front and rear extension (rear shaft with 0.8mm dia. and 10mm length), special machining on the shaft, simple sealed housing (in case of servomount type, the housing length becomes longer by 1.5mm).

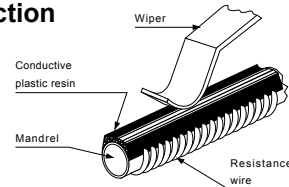
■ Features of Hybrid resistive element

The hybrid resistive element type potentiometer is the newest type potentiometer, in which the merits of a wirewound resistive element are combined with those of a film type resistive element.

■ Main Features

- Good stability of resistance value
- Good resistance temperature coefficient
- Essentially infinity resolution
- Less resistance variation
- Long life expectancy 10,000,000 shaft

■ Construction



ALTHERIS bv

Scheveningseweg 15
2517 KS DEN HAAG
The Netherlands

+31 (0)70 3924421

+31 (0)70 3644249

Offices in : Benelux | Germany | France | UK | Italy | USA

www.altheris.com

sales@altheris.nl

LEADERS IN SENSORS & HEAVY DUTY JOYSTICKS

ALTHERIS
SENSORS & CONTROLS