

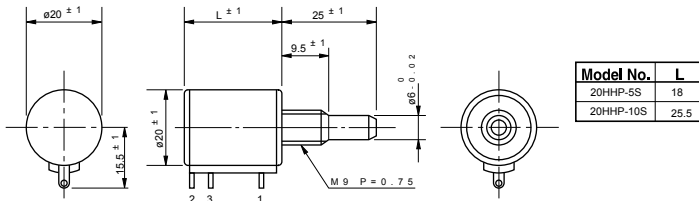


Model 20HHP

Hybrid (bushingmount servomount)

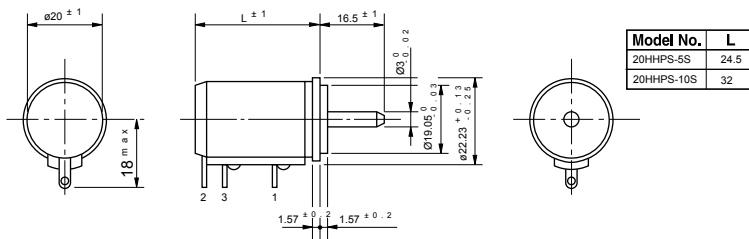
Standard dimensions (with metric dimensions)

Bushingmount type



Note: 1pc. Inner teeth washer and 2 pcs. Hex nuts are attached

Servomount type



Standard Model Nos.

Bushingmount type:

- 20HHP-5S (5-turn)
- 20HHP-10S (10-turn)

Servomount type:

- 20HHP-5S (5-turn)
- 20HHP-10S (10-turn)

General Specifications

Standard Resistance

- Values:** 2k, 5k, 10k, 20k, 50k (Ω) (5-turn)
 2k, 5k, 10k, 20k, 50k, 100k (Ω) (10-turn)

Total Resistance

- Tolerance:** Standard Class ±10%(K)
 Precision Class ±5%(J)

Independent Linearity

- Tolerance:**
- | | 5-turn | 10-turn |
|-----------------|--------|---------|
| Standard Class | ±0.35% | ±0.25% |
| Precision Class | ±0.2% | ±0.1% |

Resolution:

Essentially infinite

Output Smoothness:

- Within 0.05% against input voltage (5-turn)
 Within 0.015% against input voltage (10-turn)

Contact Resistance Variation:	Within 5% C.R.V. (5-turn) Within 3% C.R.V. (10-turn)
Power Rating:	1.0W (5-turn) 2.0W (10-turn)
Electrical Travel:	360° X n ±5° (n: No. of turns)
Mechanical Travel:	360° X n $^{+10^{\circ}}_{0^{\circ}}$ (n: No. of turns)
Insulation Resistance:	Over 100MΩ at 1,000V.D.C.
Dielectric Strength:	1 minute at 1,000 V.A.C.
Starting Torque:	Within 5mN·m (50gf·cm) (bushingmount type) Within 5mN·m (50gf·cm) (Servomount type)
Stopper Strength:	Approx. 0.9N · m (9kgf · cm) (bushingmount type) Approx. 0.9N · m (6kgf · cm) (servomount type)
Max. Working Voltage:	500V
Resistance Temperature Coefficient:	±100p.p.m./°C
Mass:	Approx. 20g (5-turn) Approx. 30g (10-turn)

■ Special Specifications Available

Extra taps (available up to 1 tap, Multi-ganged (available up to 2-gangs) , Shaft with front and rear extension (rear shaft with 2mm dia. and 10mm length) Shaft dia. (ø6.35 for 20HHP, ø3.175 for 20HHPS) • bushing with inch dimensions < special Machining on the shaft, With slipping -clutch (20mN·m~60mN·m) with a limit-switch adaptor ., simple sealed housing (except servomount type).

ALThERIS bv

Scheveningseweg 15
2517 KS DEN HAAG
The Netherlands

☎ +31 (0)70 3924421

☎ +31 (0)70 3644249

Offices in : Benelux | Germany | France | UK | Italy | USA

🌐 www.altheris.com

✉ sales@altheris.nl

LEADERS IN SENSORS & HEAVY DUTY JOYSTICKS

ALThERIS
SENSORS & CONTROLS