

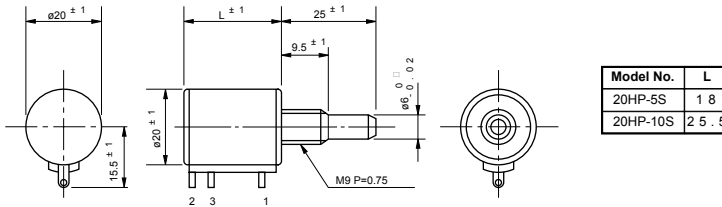


Model 20HP

Wirewound (Bushingmount Servomount)

Standard dimensions

Bushingmount type

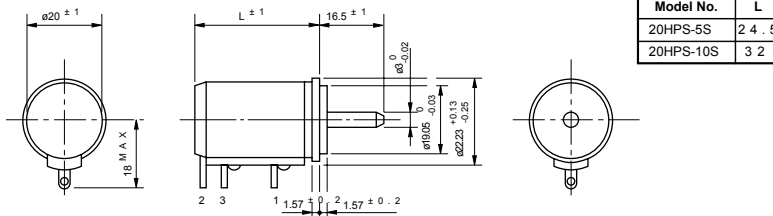


Note: 1 pc. inner teeth washer and 2 pcs. hex nuts are attached



Model 20HP-10S

Servomount type



Standard Model Nos.

Bushingmount type:

- 20HP-5S (5-turn)
- 20HP-10S (10-turn)

Servomount type:

- 20HPS-5S (5-turn)
- 20HPS-10S (10-turn)

Standard Model Nos.

Standard Resistance

- Range:** 100Ω to 50kΩ (5-turn)
 100Ω to 100kΩ (10-turn)

Max. Practical

- Resistance Value:** 100kΩ (5-turn)
 150kΩ (10-turn)

Total Resistance

- Tolerance:** Standard Class ±3%(H)
 Precision Class ±1%(F)

Independent Linearity

- Tolerance:**
- | | 5-turn | 10-turn |
|-----------------|----------|----------|
| Standard Class | ±0.3% | ±0.2% |
| Precision Class | ±0.2% | ±0.1% |
| (within 5kΩ) | (±0.25%) | (±0.15%) |

Power Rating:

- 1.0W (5-turn)
 2.0W (10-turn)

Noise:

Within 100μ E.N.R.

Electrical Travel:

360° Xn ±5° (n: No. of turns)

Mechanical Travel:

360° Xn ⁺¹⁰₀° (n: No. of turns)

Insulation Resistance:

Over 100 MΩ at 1,000V D.C.

Dielectric Strength:

1 minute at 1,000 V.A.C.

Starting Torque:

Within 5mN·m (50gf·cm)

(Bushingmount type)

Within 3mN·m (30gf·cm)

(Servomount type)

Stopper Strength:

Approx. 0.9N·m (9kgf·cm)

(Bushingmount type)

Approx. 0.6N·m (6kgf·cm)

(Servomount type)

Max. Working Voltage:

900V

Resist. Temperature

Coefficient of Wire:

±20p.p.m./°C

Mass:

Approx. 25g (5-turn)
 Approx. 30g (10-turn)

■ **Standard Resistance Values | No. Of Wire Turns | Resistance Wire Used**

Resist. Value (Ω)	100	200	500	1k	2k	5k	10k	20k	50k	100k
12HPC-5	1,100	1,500	2,000	2,500	2,400	3,200	3,900	4,800	5,500	※6,500
12HPC-10	1,800	2,200	3,200	4,000	5,000	5,000	6,400	7,800	10,000	11,000
Resist. Wire Used	Cu-Ni System					Ni-Cr System				

Note: Mark※shows value at special higher practical resistance

■ **Special Specifications Available**

3-turn type (S20HP-3S), lower resistance values (10 Ω , 20 Ω , 50 Ω), extra taps (available up to 1 tap), multi-ganged (available up to 2 gangs), shaft with front and rear extension (rear shaft with 2mm dia. and 10mm length), shaft dia. (\varnothing 6.35mm) · bushing with inch dimensions, special machining on the shaft, simple sealed housing (except servomount type), slipping-clutch incorporated type (S20HP-10S-1782, 20mN·m~60mN·m), with a limit-switch adaptor, with pin terminals for p.c. board (20HP-5P, 20HP-10P).

ALTHERIS bv

Scheveningseweg 15
2517 KS DEN HAAG
The Netherlands

☎ +31 (0)70 3924421

☎ +31 (0)70 3644249

Offices in : Benelux | Germany | France | UK | Italy | USA

🌐 www.altheris.com

✉ sales@altheris.nl

LEADERS IN SENSORS & HEAVY DUTY JOYSTICKS

ALTHERIS
SENSORS & CONTROLS