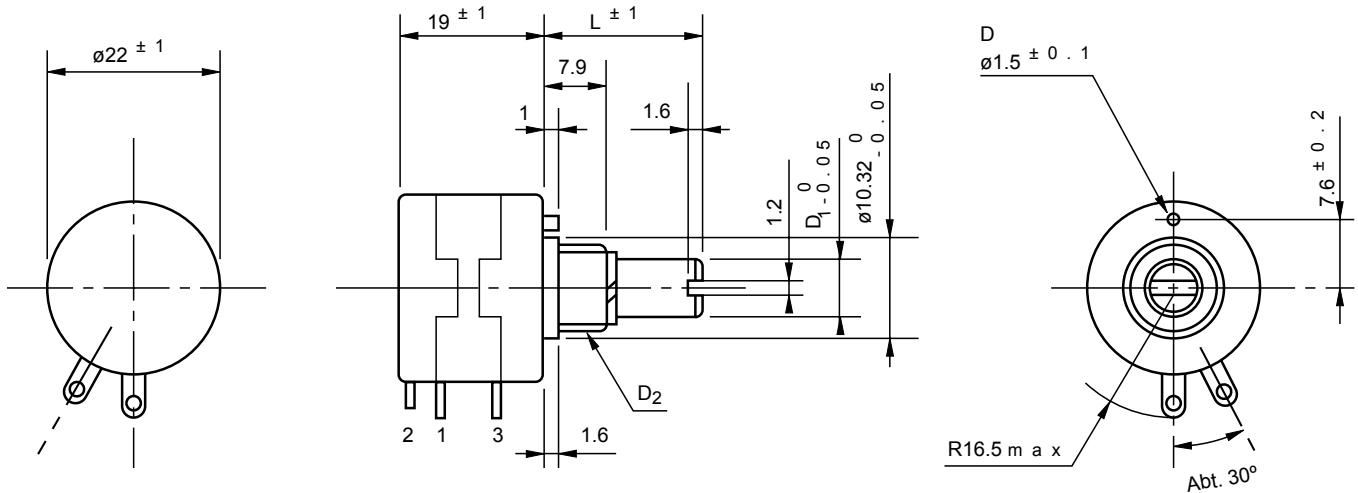




Model 22HP

Wirewound (Bushingmount) Low cost item

Standard dimensions



Model No.	Shaft Dimensions		Mounting Screw	Anti-rotation
	d1	L	d2	D
22HP-10	ø6	20.6	3/8-32 UNEF	Yes
22HP-10M	ø6	25.0	M9 P=0.75	No
22HP-10E	ø6.35	20.6	3/8-32 UNEF	Yes
22HP-10N	ø6	20.6	M9 P=0.75	No



Model 22HP-10

- Note:
- 1pc. each inner teeth washer and hex nut are attached.
 - Outer dimensions of 5-turn version are same as those of 10-turn
 - Please process the mounting hole on the panel to be mounted with this potentiometer by the diameter of 10.32mm

Standard Model Nos.

5-turn models:

22HP-5 22HP-5M
 22HP-5E 22HP-5N

10-turn models:

22HP-10 22HP-10M
 22HP-10E 22HP-10N

Note: Please select the exact model number from the right-side table, because each model number has different shaft dia. and bushing dimensions.

■ General Specifications

Standard Resistance

Range: 100Ω to 50kΩ (5-turn)
100Ω to 100kΩ (10-turn)

Total Resistance

Tolerance: Standard Class ±3%(H)
Precision Class ±1%(F)

Independent Linearity

Tolerance:

	5-turn	10-turn
Standard Class	±0.3%	±0.25%
Precision Class	±0.2%	±0.1%
(within 5kΩ)	(±0.25%)	(±0.15%)

Power Rating:

1.0W (5-turn)
2.0W (10-turn)

Noise:

Within 100Ω E.N.R.

Electrical Travel:

360° Xn ±5° (n: No. of turns)

Mechanical Travel:

360° Xn ^{+10°}_{0°} (n: No. of turns)

Insulation Resistance:

Over 1,000MΩ at 500 V.D.C.

Dielectric Strength:

1 minute at 1,000 V.A.C.

Starting Torque:

Within 10mN·m (100gf·cm)

Stopper Strength:

Approx. 0.35N·m (3.5kgf·cm)

Max. Torque exerted on fastening the mounting nut to the bushing:

Within 1.0N·m (10kgf·cm)
(in case of panel thickness with over 2.5mm, the rotating torque may become heavier).

Max. Working Voltage:

250V

Resist. Temperature

±20p.p.m./°C

Coefficient of Wire:

Shaft:

Stainless steel

Housing case:

Glass-filled nylon

Bushing:

Glass-filled nylon
(for ganged version the bushing is metal-brass without plating).

Terminals:

Gold-plated brass
(all terminals can be fitted with the AMP 110 series faston receptacle (2.8x0.5mm) or equivalents.

Mass:

Approx. 20g (both 5-turn and 10-turn).

■ Standard Resistance Values | No. Of Wire Turns | Resistance Wire Used

Resist. Value (Ω)	100	200	500	1k	2k	5k	10k	20k	50k	100k
22HP-5	1, 2 4 0	1, 5 6 0	2, 0 0 0	2, 5 1 0	2, 4 0 0	3, 2 0 0	3, 9 0 0	4, 8 0 0	5, 5 0 0	-
22HP-10	2, 1 0 0	2, 4 8 0	3, 3 0 0	4, 0 0 0	5, 0 2 0	5, 0 0 0	6, 4 0 0	7, 8 0 0	10, 1 0 0	11, 0 0 0
Resist. Wire Used	Cu-Ni System					Ni-Cr System				

■ Special Specifications Available

Shaft with front and rear extension (rear shaft with 6mm dia. and 15mm length), multi-ganged (available up to 10 gangs), with high torque, special shaft dia. (ø3mm, ø3.175mm, ø4mm, ø5mm), special machining on the shaft, with plastic shaft, metal bushing type (22HPM-n with anti-rotation pin), 1, 2, 3, 4, 6, 7 and 8-turn versions are available (these versions have the same outer dimensions, but general specifications are please request us for details), simple sealed housing, slipping-clutch incorporated type (20mN·m~60mN·m), extra taps (available up to 1 tap only for 10-turn model), servomount type (same dimensions as 22HHPS-10).

LEADERS IN SENSORS & HEAVY DUTY JOYSTICKS

ALTHERIS bv

Scheveningseweg 15
2517 KS DEN HAAG
The Netherlands

☎ +31 (0)70 3924421

☎ +31 (0)70 3644249

Offices in : Benelux | Germany | France | UK | Italy | USA

🌐 www.altheris.com

✉ sales@altheris.nl

ALTHERIS
SENSORS & CONTROLS