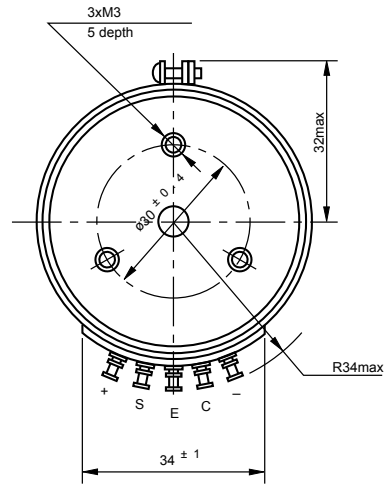
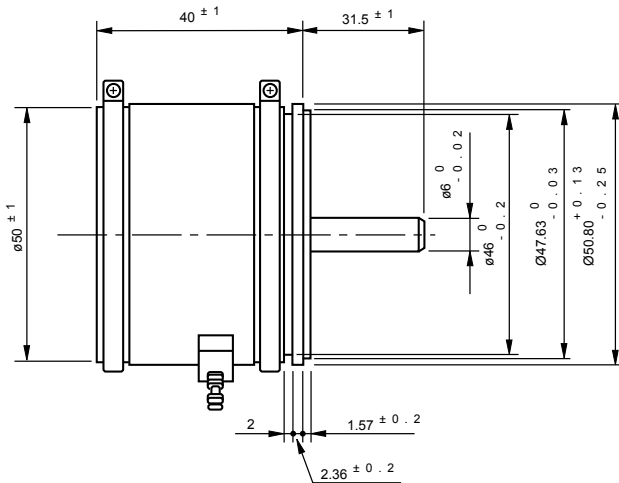




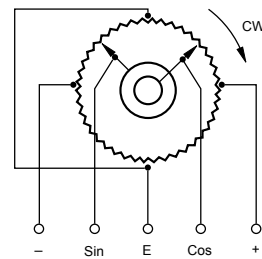
Model SCB50

Wirewound (Servomount)

Standard dimensions



Model SCB50



General Specifications

Standard Resistance

Range:	500Ω to 10kΩ
Max. Practical Resistance Value:	20kΩ
Total Resistance Tolerance:	Standard Class ±5%(J) Precision Class ±3%(H)
Conformity Tolerance:	Standard Class ±1.0%(J) Precision Class ±0.5%(Over 5kHΩ) ±0.7%(Within 5kHΩ)
Power Rating:	2.0W

Noise:	Within 100 Ω E.N.R.
Electrical Travel:	360° (Endless)
Mechanical Travel:	360° (Endless)
Insulation Resistance:	Over 1.000MΩ at 1.00 V.D.C.
Dielectric Strength:	1 minute at 1.000 V.A.C.
Starting Torque:	Within 11mN·m (1100gf·cm)
Max. Working Voltage:	250V
Resist. Temperature Coefficient of Wire:	±20p.p.m./°C
Mass:	Approx. 160g

■ **Standard Resistance Values | No. Of Wire Turns | Resistance Wire Used**

Resist. Value (Ω)	500	1k	2k	5k	10k	※ 20k
No. Of Wire turns	1, 0 0 0	1, 4 0 0	1, 8 0 0	1, 8 0 0	2, 0 0 0	2, 5 0 0
Resist. Wire Used	Cu-Ni System			Ni-Cr System		

Note: Mark※shows value at special higher practical resistance

■ **Special Specifications Available**

Multi-ganged (available up to 3 gangs. Housing length is extended by 30mm per 1 gang) shaft with front and rear extension (rear shaft with 6mm dia. and 15mm length), Bushingmount type, Shaft dia. (ø6.35mm) with inch dimensions, Special machining on the shaft, Oil filled type.

LEADERS IN SENSORS & HEAVY DUTY JOYSTICKS

ALTHERIS bv

Scheveningseweg 15
2517 KS DEN HAAG
The Netherlands

+31 (0)70 3924421

+31 (0)70 3644249

Offices in : Benelux | Germany | France | UK | Italy | USA

www.altheris.com

sales@altheris.nl

